

data reviewed by B. Wylie on 8/4/16

8/3/2016



Worklist: 1222

<u>LAB_CASE</u>	<u>ITEM</u>	<u>TASK_ID</u>	<u>DESCRIPTION</u>	
M2016-0739	1	61949	6.1.1 Blood LCMS-QQQ Benzc	
M2016-0983	1	61950	6.1.1 Blood LCMS-QQQ Benzc	
P2016-0433	1	61951	6.1.1 Blood LCMS-QQQ Benzc	
P2016-0474	1	61953	6.1.1 Blood LCMS-QQQ Benzc	
P2016-0525	1	61954	6.1.1 Blood LCMS-QQQ Benzc	
P2016-0527	1	61955	6.1.1 Blood LCMS-QQQ Benzc	
P2016-0544	1	61956	6.1.1 Blood LCMS-QQQ Benzc	
P2016-0568	1	61957	6.1.1 Blood LCMS-QQQ Benzc	
P2016-0572	1	61958	6.1.1 Blood LCMS-QQQ Benzc	
P2016-0655	1	61960	6.1.1 Blood LCMS-QQQ Benzc	
P2016-0669	1	61961	6.1.1 Blood LCMS-QQQ Benzc	
P2016-0785	1	61962	6.1.1 Blood LCMS-QQQ Benzc	

Worklist Report

Worklist Path:	C:\MassHunter\ISP Methods\worklists\CS Combined 080216.wkl
Date Modified:	08/02/2016 02:45:07 PM
Date Printed:	08/02/2016 02:45:12 PM

Worklist Run Parameters

Operator Name:	62340
Run Type:	Standard Start
Part of Method to Run:	Acquisition Only
Execution for Acquisition-DA:	Synchronous
Acquisition Method Path:	C:\MassHunter\ISP Methods\Acquisition
DA Method Path:	D:\MassHunter\methods
Data File Path:	C:\MassHunter\Data\2016\Combined\072216 CS
Pre-Worklist Script:	---
Post-Worklist Script:	SCP_InstrumentStandby(){MH_Acq_Scripts.exe}
Acquisition Clean Up Script:	SCP_InstrumentStandby(){MH_Acq_Scripts.exe}
Overlapped Injection:	No
Clear sample selection after run:	Yes
Wait Time for Ready(Min):	10
Threshold Disk Value(GB):	10
Comment:	---

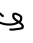
Plate Barcode Information

Plate	Barcode
P1	
P2	

Worklist Table

Sample Position	Sample Name	Method	Data File	Sample Type	Level Name	Comment	Info.
P2-A1	Blank	isp blood cannabinoids Poky 2016-1.m	Blank1-r001.d	Blank		AM 6.1.2 Cannabinoids by LCQQQ	
P2-A1	Blank	isp blood cannabinoids Poky 2016-1.m	Blank2-r001.d	Blank		AM 6.1.2 Cannabinoids by LCQQQ	
P2-A2	Blood: 1_5 ng/mL	isp blood cannabinoids Poky 2016-1.m	B_CAL1-r001.d	Calibration	1	AM 6.1.2 Cannabinoids by LCQQQ	c-THC @5ng/mL, all others @1 ng/mL
P2-A3	Blood: 2_10 ng/mL	isp blood cannabinoids Poky 2016-1.m	B_CAL2_r001.d	Calibration	2	AM 6.1.2 Cannabinoids by LCQQQ	c-THC @10ng/mL, all others @2 ng/mL
P2-A4	Blood: 5_25 ng/mL	isp blood cannabinoids Poky 2016-1.m	B_CAL3_r001.d	Calibration	3	AM 6.1.2 Cannabinoids by LCQQQ	c-THC @25ng/mL, all others @5 ng/mL
P2-A5	Blood: 10_50 ng/mL	isp blood cannabinoids Poky 2016-1.m	B_CAL4_r001.d	Calibration	4	AM 6.1.2 Cannabinoids by LCQQQ	c-THC @50ng/mL, all others @10 ng/mL
P2-A6		isp blood cannabinoids Poky 2016-1.m	B_CAL5_r001.d	Calibration	5		c-THC @125ng/mL, all

Sample Position	Sample Name	Method	Data File	Sample Type	Level Name	Comment	Info. 
	Blood: 25_125 ngmL					AM 6.1.2 Cannabinoids by LCQQQ	others @25 ng/mL
P2-A7	Blood: 50_250 ngmL	isp blood cannabinoids Poky 2016-1.m	B_CAL6_r001.d	Calibration	6	AM 6.1.2 Cannabinoids by LCQQQ	c-THC @250ng/mL, all others @50 ng/mL
P2-A8	Blood: 100_500 ngmL	isp blood cannabinoids Poky 2016-1.m	B_CAL7_r001.d	Calibration	7	AM 6.1.2 Cannabinoids by LCQQQ	c-THC @500ng/mL, all others @100 ng/mL
P2-A1	Blank	isp blood cannabinoids Poky 2016-1.m	Carryover blank1_r001.d	Blank		AM 6.1.2 Cannabinoids by LCQQQ	
P2-A9	Blood Negative Control	isp blood cannabinoids Poky 2016-1.m	B-NC-r001.d	Sample		AM 6.1.2 Cannabinoids by LCQQQ	Negative Blood UTAK Lot B1013
P2-B1	Blood PC 1	isp blood cannabinoids Poky 2016-1.m	B-POS Ctrl 1-r001.d	Sample		AM 6.1.2 Cannabinoids by LCQQQ	Positive Control-UTAK B1013 + WS060716
P2-A1	Blank	isp blood cannabinoids Poky 2016-1.m	Carryover blank2_r001.d	Blank		AM 6.1.2 Cannabinoids by LCQQQ	
P2-A9	Blank C2016-0651-1	isp blood cannabinoids Poky 2016-1.m	C2016-0651-1_BLK_r001.d	Blank		AM 6.1.2 Cannabinoids by LCQQQ	
P2-B2	C2016-0651-1	isp blood cannabinoids Poky 2016-1.m	C2016-0651-1-r001.d	Sample		AM 6.1.2 Cannabinoids by LCQQQ	Blood
P2-A9	Blank P2016-0423-1	isp blood cannabinoids Poky 2016-1.m	P2016-0423-1_BLK_r001.d	Blank		AM 6.1.2 Cannabinoids by LCQQQ	
P2-B3	P2016-0423-1	isp blood cannabinoids Poky 2016-1.m	P2016-0423-1-r001.d	Sample		AM 6.1.2 Cannabinoids by LCQQQ	Blood
P2-A9	Blank P2016-0433-1	isp blood cannabinoids Poky 2016-1.m	P2016-0433-1_BLK_r001.d	Blank		AM 6.1.2 Cannabinoids by LCQQQ	
P2-B4	P2016-0433-1	isp blood cannabinoids Poky 2016-1.m	P2016-0433-1-r001.d	Sample		AM 6.1.2 Cannabinoids by LCQQQ	Blood
P2-A9	Blank P2016-0438-1	isp blood cannabinoids Poky 2016-1.m	P2016-0438-1_BLK_r001.d	Blank		AM 6.1.2 Cannabinoids by LCQQQ	
P2-B5	P2016-0438-1	isp blood cannabinoids Poky 2016-1.m	P2016-0438-1-r001.d	Sample		AM 6.1.2 Cannabinoids by LCQQQ	Blood
P2-A9	Blank P2016-0441-1	isp blood cannabinoids Poky 2016-1.m	P2016-0441-1_BLK_r001.d	Blank		AM 6.1.2 Cannabinoids by LCQQQ	
P2-B6	P2016-0441-1	isp blood cannabinoids Poky 2016-1.m	P2016-0441-1-r001.d	Sample		AM 6.1.2 Cannabinoids by LCQQQ	Blood
P2-A1	Blank	isp blood cannabinoids Poky 2016-1.m	cann-Carryover blank3_r001.d	Blank		AM 6.1.2 Cannabinoids by LCQQQ	
P2-C3	Blood PC 2	isp blood cannabinoids Poky 2016-1.m	B-POS Ctrl 2-r001.d	Sample		AM 6.1.2 Cannabinoids by LCQQQ	Positive Control-UTAK B1013 + WS060716
P2-A1	Blank	isp blood cannabinoids Poky 2016-1.m	Carryover blank4_r001.d	Blank		AM 6.1.2 Cannabinoids by LCQQQ	

Sample Position	Sample Name	Method	Data File	Sample Type	Level Name	Comment	Info. 
P2-A9	Blank P2016-0473-1	isp blood cannabinoids Poky 2016-1.m	P2016-0473-1_BLK_r001.d	Blank		AM 6.1.2 Cannabinoids by LCQQQ	
P2-B7	P2016-0473-1	isp blood cannabinoids Poky 2016-1.m	P2016-0473-1-r001.d	Sample		AM 6.1.2 Cannabinoids by LCQQQ	Blood
P2-A9	Blank P2016-0474-1	isp blood cannabinoids Poky 2016-1.m	P2016-0474-1_BLK_r001.d	Blank		AM 6.1.2 Cannabinoids by LCQQQ	
P2-B8	P2016-0474-1	isp blood cannabinoids Poky 2016-1.m	P2016-0474-1-r001.d	Sample		AM 6.1.2 Cannabinoids by LCQQQ	Blood
P2-A9	Blank P2016-0475-1	isp blood cannabinoids Poky 2016-1.m	P2016-0475-1_BLK_r001.d	Blank		AM 6.1.2 Cannabinoids by LCQQQ	
P2-B9	P2016-0475-1	isp blood cannabinoids Poky 2016-1.m	P2016-0475-1-r001.d	Sample		AM 6.1.2 Cannabinoids by LCQQQ	Blood
P2-A9	Blank P2016-0572-1	isp blood cannabinoids Poky 2016-1.m	P2016-0572-1_BLK_r001.d	Blank		AM 6.1.2 Cannabinoids by LCQQQ	
P2-C1	P2016-0572-1	isp blood cannabinoids Poky 2016-1.m	P2016-0572-1-r001.d	Sample		AM 6.1.2 Cannabinoids by LCQQQ	Blood
P2-A9	Blank P2016-0614-1	isp blood cannabinoids Poky 2016-1.m	P2016-0614-1_BLK_r001.d	Blank		AM 6.1.2 Cannabinoids by LCQQQ	
P2-C2	P2016-0614-1	isp blood cannabinoids Poky 2016-1.m	P2016-0614-1-r001.d	Sample		AM 6.1.2 Cannabinoids by LCQQQ	Blood
P2-A9	Blank P2016-0667-1	isp blood cannabinoids Poky 2016-1.m	P2016-0667-1_BLK_r001.d	Blank		AM 6.1.2 Cannabinoids by LCQQQ	
P2-C4	P2016-0667-1	isp blood cannabinoids Poky 2016-1.m	P2016-0667-1-r001.d	Sample		AM 6.1.2 Cannabinoids by LCQQQ	Blood
P2-A9	Blank P2016-0669-1	isp blood cannabinoids Poky 2016-1.m	P2016-0669-1_BLK_r001.d	Blank		AM 6.1.2 Cannabinoids by LCQQQ	
P2-C5	P2016-0669-1	isp blood cannabinoids Poky 2016-1.m	P2016-0669-1-r001.d	Sample		AM 6.1.2 Cannabinoids by LCQQQ	Blood
P2-A1	Blank	isp blood cannabinoids Poky 2016-1.m	Blank3-r001.d	Blank		AM 6.1.2 Cannabinoids by LCQQQ	Blood
P1-F9	Blank	Benzos_Z_Drugs_ACN_FA_ISP_2016.m	BZ-Blank1-r001.d	Blank		AM 6.1.1 Benzo and Z by LCQQQ	Blood
P1-F9	Blank	Benzos_Z_Drugs_ACN_FA_ISP_2016.m	BZ-Blank2-r001.d	Blank		AM 6.1.1 Benzo and Z by LCQQQ	Blood
P1-F8	5 ng/mL	Benzos_Z_Drugs_ACN_FA_ISP_2016.m	BZ-5 ng/mL-r001.d	Calibration	1	AM 6.1.1 Benzo and Z by LCQQQ	Blood
P1-F7	10 ng/mL	Benzos_Z_Drugs_ACN_FA_ISP_2016.m	BZ-10 ng/mL-r001.d	Calibration	2	AM 6.1.1 Benzo and Z by LCQQQ	
P1-F6	25 ng/mL	Benzos_Z_Drugs_ACN_FA_ISP_2016.m	BZ-25 ng/mL_r001.d	Calibration	3	AM 6.1.1 Benzo and Z by LCQQQ	
P1-F5	50 ng/mL	Benzos_Z_Drugs_ACN_FA_ISP_2016.m	BZ-50 ng/mL_r001.d	Calibration	4		

Sample Position	Sample Name	Method	Data File	Sample Type	Level Name	Comment	Info. ٢٩
						AM 6.1.1 Benzo and Z by LCQQQ	
P1-F4	100 ngmL	Benzos_Z_Drugs_ACN_FA_ISP_2016.m	BZ-100 ngmL_r001.d	Calibration	5	AM 6.1.1 Benzo and Z by LCQQQ	
P1-F3	500 ngmL	Benzos_Z_Drugs_ACN_FA_ISP_2016.m	BZ-500 ngmL_r001.d	Calibration	6	AM 6.1.1 Benzo and Z by LCQQQ	
P1-F2	1000 ngmL	Benzos_Z_Drugs_ACN_FA_ISP_2016.m	BZ-1000 ngmL_r001.d	Calibration	7	AM 6.1.1 Benzo and Z by LCQQQ	
P1-F1	3000 ngmL	Benzos_Z_Drugs_ACN_FA_ISP_2016.m	BZ-3000 ngmL_r001.d	Calibration	8	AM 6.1.1 Benzo and Z by LCQQQ	
P1-F9	Blank	Benzos_Z_Drugs_ACN_FA_ISP_2016.m	BZ-Carryover blank1_r001.d	Blank		AM 6.1.1 Benzo and Z by LCQQQ	
P1-E9	Negative Blood Control	Benzos_Z_Drugs_ACN_FA_ISP_2016.m	BZ-NC-B_r001.d	Sample		AM 6.1.1 Benzo and Z by LCQQQ	UTAK Negative Whole Blood LOT B1013
P1-E8	Positive Blood Control	Benzos_Z_Drugs_ACN_FA_ISP_2016.m	BZ-PC-B-r001.d	Sample		AM 6.1.1 Benzo and Z by LCQQQ	Benzodiazepines Mix Cerilliant lot FE012413-02 in UTAK LOT B1013
P1-E9	Blank - M2016- 0739-1	Benzos_Z_Drugs_ACN_FA_ISP_2016.m	BZ-Carryover blank-M2016- 0739-1_r001.d	Blank		AM 6.1.1 Benzo and Z by LCQQQ	
P1-E7	M2016- 0739-1	Benzos_Z_Drugs_ACN_FA_ISP_2016.m	BZ-M2016-0739-1- r001.d	Sample		AM 6.1.1 Benzo and Z by LCQQQ	Blood
P1-E9	Blank - M2016- 0983-1	Benzos_Z_Drugs_ACN_FA_ISP_2016.m	BZ-Carryover blank-M2016- 0983-1_r001.d	Blank		AM 6.1.1 Benzo and Z by LCQQQ	
P1-E6	M2016- 0983-1	Benzos_Z_Drugs_ACN_FA_ISP_2016.m	BZ-M2016-0983-1- r001.d	Sample		AM 6.1.1 Benzo and Z by LCQQQ	Blood
P1-E9	Blank - P2016- 0433-1	Benzos_Z_Drugs_ACN_FA_ISP_2016.m	BZ-Carryover blank-P2016- 0433-1_r001.d	Blank		AM 6.1.1 Benzo and Z by LCQQQ	
P1-E5	P2016- 0433-1	Benzos_Z_Drugs_ACN_FA_ISP_2016.m	BZ-P2016-0433-1- r001.d	Sample		AM 6.1.1 Benzo and Z by LCQQQ	Blood
P1-E9	Blank - P2016- 0474-1	Benzos_Z_Drugs_ACN_FA_ISP_2016.m	BZ-Carryover blank-P2016- 0474-1_r001.d	Blank		AM 6.1.1 Benzo and Z by LCQQQ	
P1-E4	P2016- 0474-1	Benzos_Z_Drugs_ACN_FA_ISP_2016.m	BZ-P2016-0474-1- r001.d	Sample		AM 6.1.1 Benzo and Z by LCQQQ	Blood
P1-E9	Blank - P2016- 0525-1	Benzos_Z_Drugs_ACN_FA_ISP_2016.m	BZ-Carryover blank-P2016- 0525-1_r001.d	Blank		AM 6.1.1 Benzo and Z by LCQQQ	
P1-E3	P2016- 0525-1	Benzos_Z_Drugs_ACN_FA_ISP_2016.m	BZ-P2016-0525-1- r001.d	Sample		AM 6.1.1 Benzo and Z by LCQQQ	Blood
P1-E9	Blank - P2016- 0527-1	Benzos_Z_Drugs_ACN_FA_ISP_2016.m	BZ-Carryover blank-P2016- 0527-1_r001.d	Blank		AM 6.1.1 Benzo and Z by LCQQQ	
P1-E2	P2016- 0527-1	Benzos_Z_Drugs_ACN_FA_ISP_2016.m	BZ-P2016-0527-1- r001.d	Sample		AM 6.1.1 Benzo and Z by LCQQQ	Blood

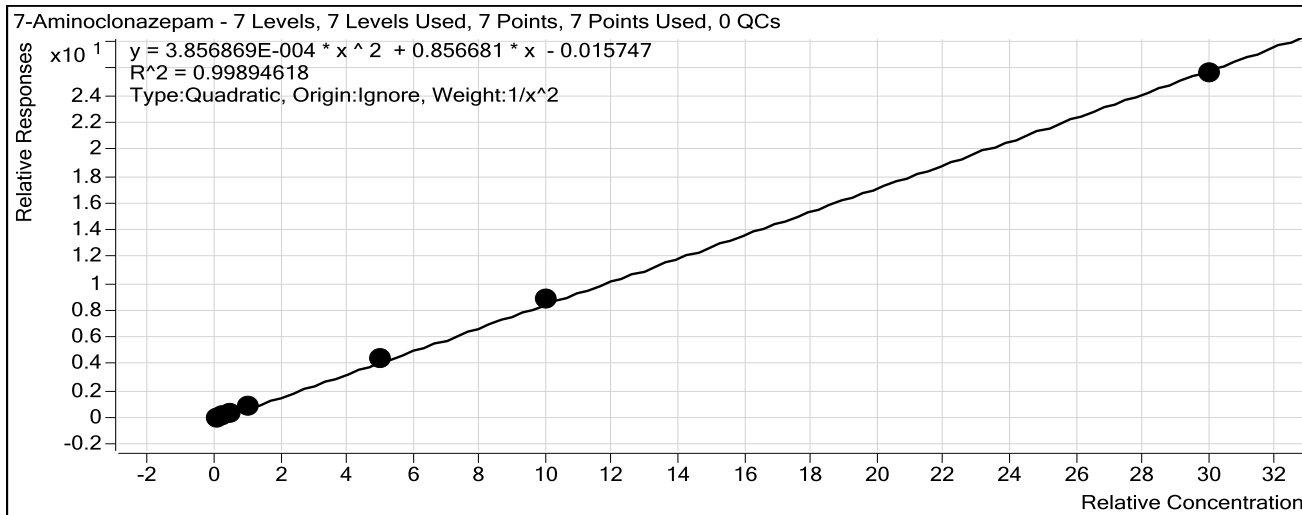
Sample Position	Sample Name	Method	Data File	Sample Type	Level Name	Comment	Info. ๘
P1-E9	Blank - P2016-0544-1	Benzos_Z_Drugs_ACN_FA_ISP_2016.m	BZ-Carryover blank-P2016-0544-1_r001.d	Blank		AM 6.1.1 Benzo and Z by LCQQQ	
P1-E1	P2016-0544-1	Benzos_Z_Drugs_ACN_FA_ISP_2016.m	BZ-P2016-0544-1-r001.d	Sample		AM 6.1.1 Benzo and Z by LCQQQ	Blood
P1-E9	Blank - P2016-0568-1	Benzos_Z_Drugs_ACN_FA_ISP_2016.m	BZ-Carryover blank-P2016-0568-1_r001.d	Blank		AM 6.1.1 Benzo and Z by LCQQQ	
P1-D9	P2016-0568-1	Benzos_Z_Drugs_ACN_FA_ISP_2016.m	BZ-P2016-0568-1-r001.d	Sample		AM 6.1.1 Benzo and Z by LCQQQ	Blood
P1-E9	Blank - P2016-0572-1	Benzos_Z_Drugs_ACN_FA_ISP_2016.m	BZ-Carryover blank-P2016-0572-1_r001.d	Blank		AM 6.1.1 Benzo and Z by LCQQQ	
P1-D8	P2016-0572-1	Benzos_Z_Drugs_ACN_FA_ISP_2016.m	BZ-P2016-0572-1-r001.d	Sample		AM 6.1.1 Benzo and Z by LCQQQ	Blood
P1-E9	Blank - P2016-0655-1	Benzos_Z_Drugs_ACN_FA_ISP_2016.m	BZ-Carryover blank-P2016-0655-1_r001.d	Blank		AM 6.1.1 Benzo and Z by LCQQQ	
P1-D7	P2016-0655-1	Benzos_Z_Drugs_ACN_FA_ISP_2016.m	BZ-P2016-0655-1-r001.d	Sample		AM 6.1.1 Benzo and Z by LCQQQ	Blood
P1-E9	Blank - P2016-0669-1	Benzos_Z_Drugs_ACN_FA_ISP_2016.m	BZ-Carryover blank-P2016-0669-1_r001.d	Blank		AM 6.1.1 Benzo and Z by LCQQQ	
P1-D6	P2016-0669-1	Benzos_Z_Drugs_ACN_FA_ISP_2016.m	BZ-P2016-0669-1-r001.d	Sample		AM 6.1.1 Benzo and Z by LCQQQ	Blood
P1-E9	Blank - P2016-0785-1	Benzos_Z_Drugs_ACN_FA_ISP_2016.m	BZ-Carryover blank-P2016-0785-1_r001.d	Blank		AM 6.1.1 Benzo and Z by LCQQQ	
P1-D5	P2016-0785-1	Benzos_Z_Drugs_ACN_FA_ISP_2016.m	BZ-P2016-0785-1-r001.d	Sample		AM 6.1.1 Benzo and Z by LCQQQ	Blood
P1-F9	Blank	Benzos_Z_Drugs_ACN_FA_ISP_2016.m	BZ-Carryover blank3_r001.d	Blank		AM 6.1.1 Benzo and Z by LCQQQ	

ISP Forensics Calibration Curve Report

Batch Data Path C:\MassHunter\Data\2016\Combined\080216 CS\QuantResults\8216 benzo.batch.bin

Last Calib Update 8/4/2016 9:11 AM **Analyst Name** ISP TOX

Target Compound 7-Aminoclonazepam
Internal Standard 7-Aminoflunitrazepam-D7 ISTD



Sample	Level	Enabled	Exp Conc	Final Conc	Accuracy
10 ng/mL	2	<input checked="" type="checkbox"/>	10	10.1	101.1
25 ng/mL	3	<input checked="" type="checkbox"/>	25	24.8	99.1
50 ng/mL	4	<input checked="" type="checkbox"/>	50	48.4	96.8
100 ng/mL	5	<input checked="" type="checkbox"/>	100	97.3	97.3
500 ng/mL	6	<input checked="" type="checkbox"/>	500	521.6	104.3
1000 ng/mL	7	<input checked="" type="checkbox"/>	1000	1027.4	102.7
3000 ng/mL	8	<input checked="" type="checkbox"/>	3000	2956.3	98.5

ISP Forensics Calibration Curve Report

Batch Data Path C:\MassHunter\Data\2016\Combined\080216 CS\QuantResults\8216 benzo.batch.bin

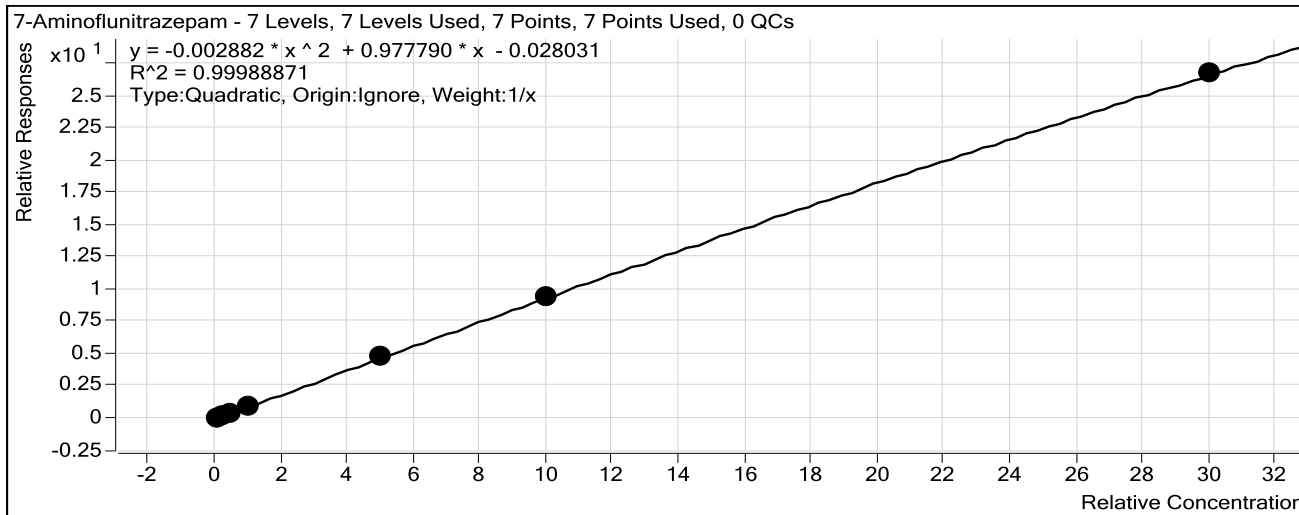
Last Calib Update 8/4/2016 9:11 AM

Analyst Name

ISP TOX

Target Compound 7-Aminoflunitrazepam

Internal Standard 7-Aminoflunitrazepam-D7 ISTD



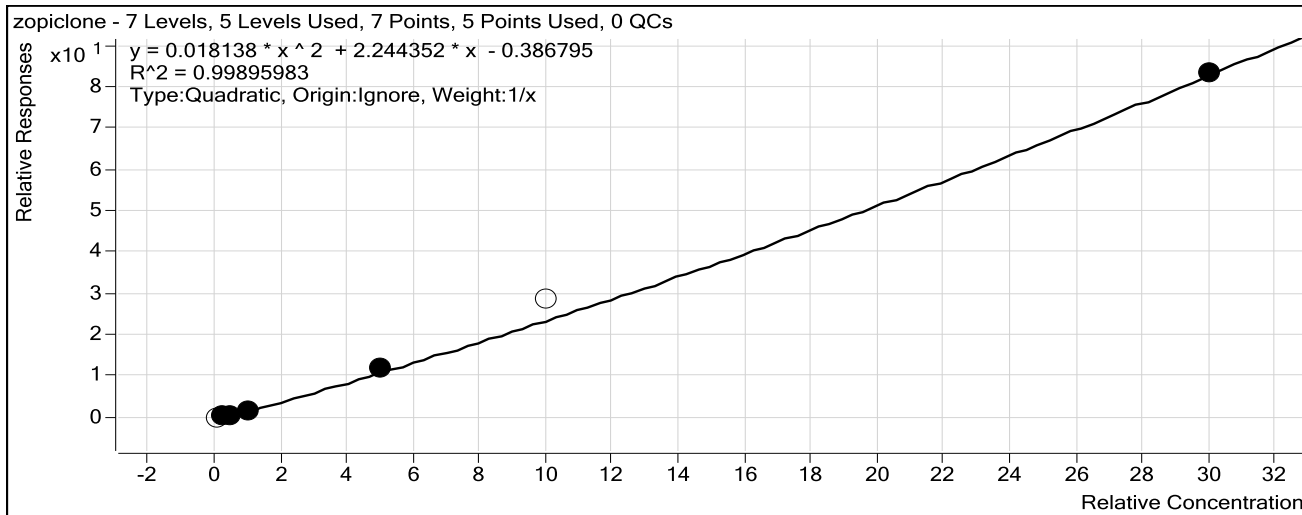
Sample	Level	Enabled	Exp Conc	Final Conc	Accuracy
10 ng/mL	2	<input checked="" type="checkbox"/>	10	10.7	106.9
25 ng/mL	3	<input checked="" type="checkbox"/>	25	25.3	101.3
50 ng/mL	4	<input checked="" type="checkbox"/>	50	47.4	94.8
100 ng/mL	5	<input checked="" type="checkbox"/>	100	95.8	95.8
500 ng/mL	6	<input checked="" type="checkbox"/>	500	505.8	101.2
1000 ng/mL	7	<input checked="" type="checkbox"/>	1000	1001.5	100.1
3000 ng/mL	8	<input checked="" type="checkbox"/>	3000	2998.5	100.0

ISP Forensics Calibration Curve Report

Batch Data Path C:\MassHunter\Data\2016\Combined\080216 CS\QuantResults\8216 benzo.batch.bin

Last Calib Update 8/4/2016 9:11 AM **Analyst Name** ISP TOX

Target Compound *zopiclone*
Internal Standard *Nordiazepam-D5 ISTD*



Sample	Level	Enabled	Exp Conc	Final Conc	Accuracy
10 ng/mL	2	<input type="checkbox"/>	10	21.8	218.0
25 ng/mL	3	<input checked="" type="checkbox"/>	25	29.9	119.5
50 ng/mL	4	<input checked="" type="checkbox"/>	50	47.6	95.3
100 ng/mL	5	<input checked="" type="checkbox"/>	100	81.8	81.8
500 ng/mL	6	<input checked="" type="checkbox"/>	500	517.0	103.4
1000 ng/mL	7	<input type="checkbox"/>	1000	1176.1	117.6
3000 ng/mL	8	<input checked="" type="checkbox"/>	3000	2998.3	99.9

ISP Forensics Calibration Curve Report

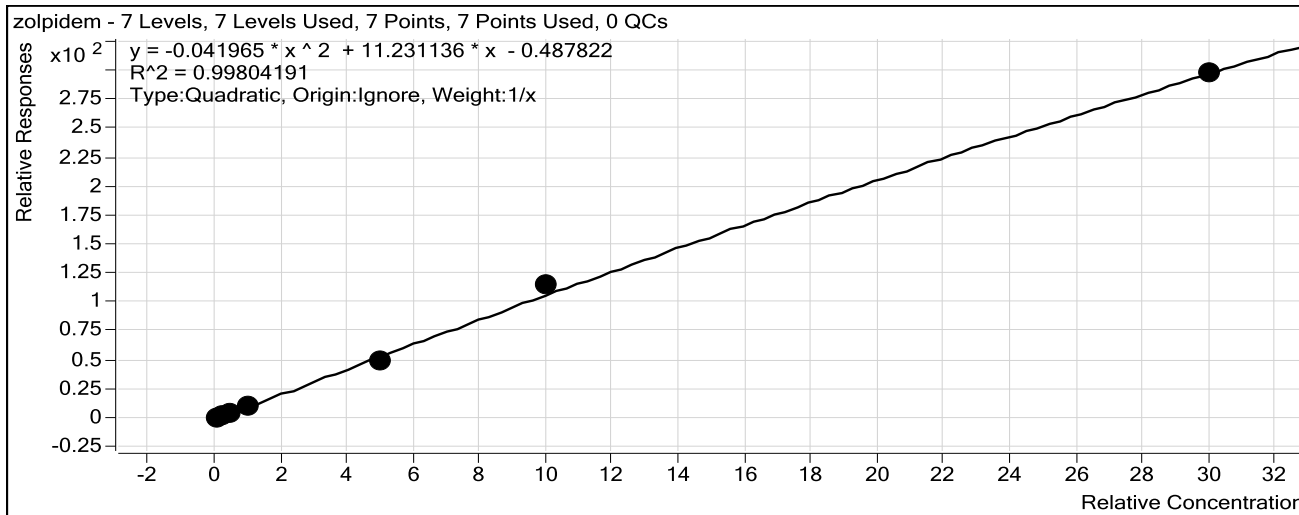
Batch Data Path C:\MassHunter\Data\2016\Combined\080216 CS\QuantResults\8216 benzo.batch.bin

Last Calib Update 8/4/2016 9:11 AM

Analyst Name ISP TOX

Target Compound zolpidem

Internal Standard Nordiazepam-D5 ISTD



Sample	Level	Enabled	Exp Conc	Final Conc	Accuracy
10 ng/mL	2	<input checked="" type="checkbox"/>	10	11.5	114.6
25 ng/mL	3	<input checked="" type="checkbox"/>	25	24.6	98.4
50 ng/mL	4	<input checked="" type="checkbox"/>	50	47.1	94.2
100 ng/mL	5	<input checked="" type="checkbox"/>	100	95.2	95.2
500 ng/mL	6	<input checked="" type="checkbox"/>	500	459.2	91.8
1000 ng/mL	7	<input checked="" type="checkbox"/>	1000	1063.8	106.4
3000 ng/mL	8	<input checked="" type="checkbox"/>	3000	2983.5	99.4

ISP Forensics Calibration Curve Report

CS

Batch Data Path C:\MassHunter\Data\2016\Combined\080216 CS\QuantResults\8216 benzo.batch.bin

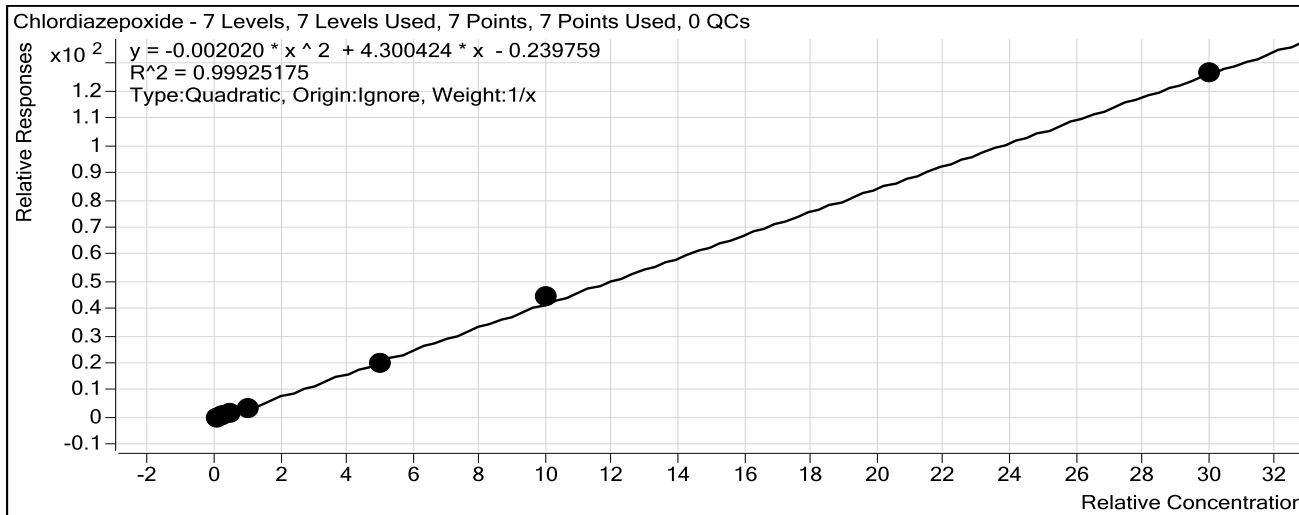
Last Calib Update 8/4/2016 9:11 AM

Analyst Name

ISP TOX

Target Compound *Chlordiazepoxide*

Internal Standard *Nordiazepam-D5 ISTD*



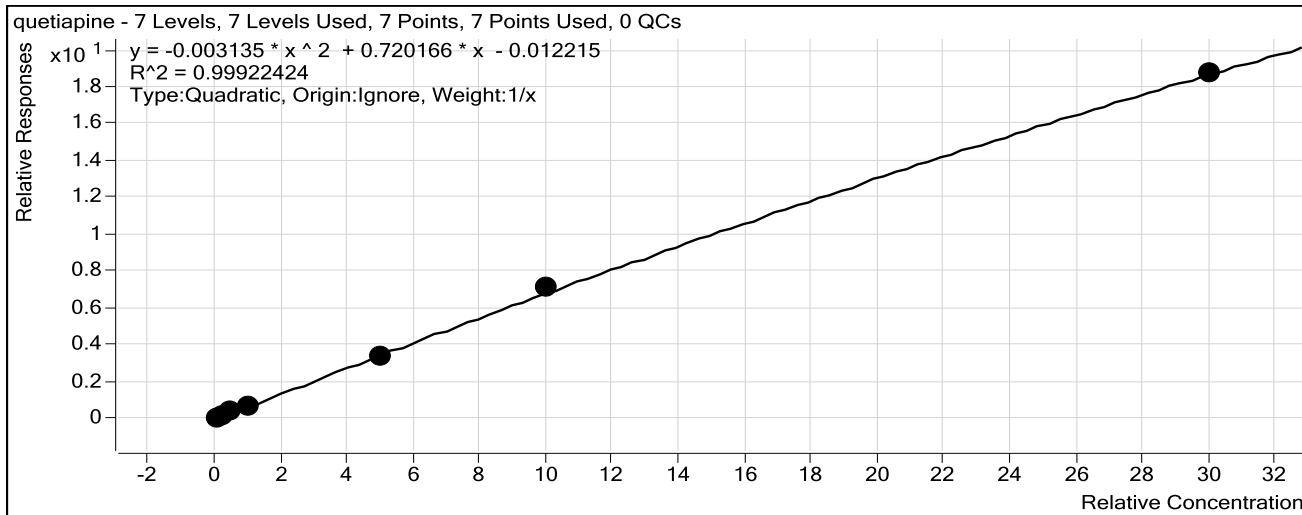
Sample	Level	Enabled	Exp Conc	Final Conc	Accuracy
10 ng/mL	2	<input checked="" type="checkbox"/>	10	11.9	119.3
25 ng/mL	3	<input checked="" type="checkbox"/>	25	23.8	95.3
50 ng/mL	4	<input checked="" type="checkbox"/>	50	46.2	92.5
100 ng/mL	5	<input checked="" type="checkbox"/>	100	93.1	93.1
500 ng/mL	6	<input checked="" type="checkbox"/>	500	481.9	96.4
1000 ng/mL	7	<input checked="" type="checkbox"/>	1000	1037.3	103.7
3000 ng/mL	8	<input checked="" type="checkbox"/>	3000	2990.7	99.7

ISP Forensics Calibration Curve Report

Batch Data Path C:\MassHunter\Data\2016\Combined\080216 CS\QuantResults\8216 benzo.batch.bin

Last Calib Update 8/4/2016 9:11 AM **Analyst Name** ISP TOX

Target Compound *quetiapine*
Internal Standard *Temazepam-D5 ISTD*



Sample	Level	Enabled	Exp Conc	Final Conc	Accuracy
10 ng/mL	2	<input checked="" type="checkbox"/>	10	10.0	100.5
25 ng/mL	3	<input checked="" type="checkbox"/>	25	27.3	109.3
50 ng/mL	4	<input checked="" type="checkbox"/>	50	47.7	95.4
100 ng/mL	5	<input checked="" type="checkbox"/>	100	96.3	96.3
500 ng/mL	6	<input checked="" type="checkbox"/>	500	475.4	95.1
1000 ng/mL	7	<input checked="" type="checkbox"/>	1000	1038.0	103.8
3000 ng/mL	8	<input checked="" type="checkbox"/>	3000	2989.9	99.7

ISP Forensics Calibration Curve Report

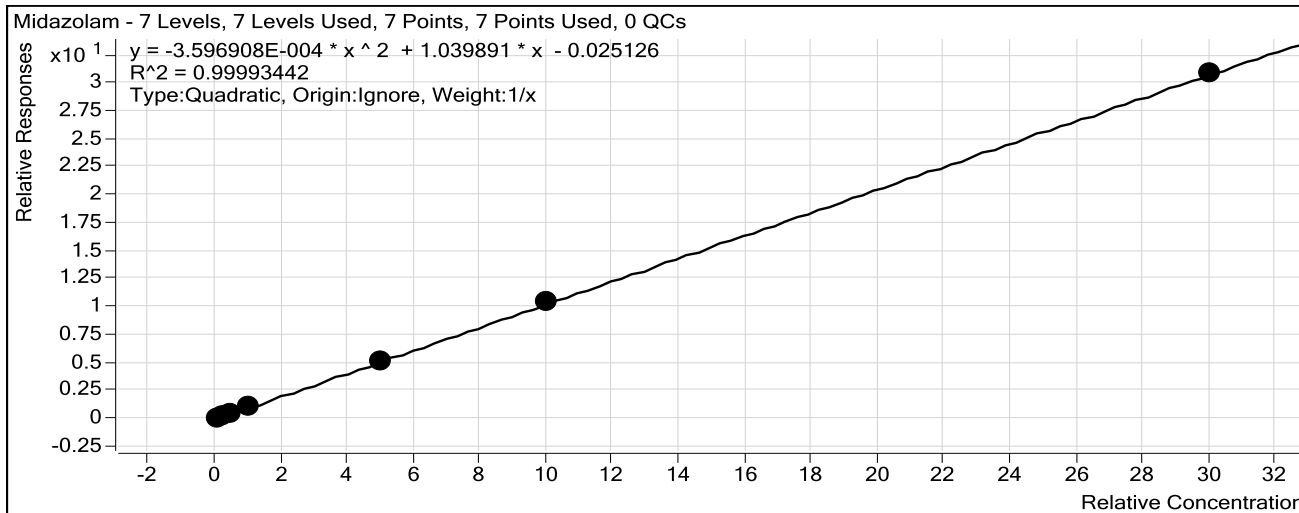
Batch Data Path C:\MassHunter\Data\2016\Combined\080216 CS\QuantResults\8216 benzo.batch.bin

Last Calib Update 8/4/2016 9:11 AM

Analyst Name ISP TOX

Target Compound Midazolam

Internal Standard Clonazepam-D4 ISTD



Sample	Level	Enabled	Exp Conc	Final Conc	Accuracy
10 ng/mL	2	<input checked="" type="checkbox"/>	10	10.2	102.1
25 ng/mL	3	<input checked="" type="checkbox"/>	25	25.8	103.0
50 ng/mL	4	<input checked="" type="checkbox"/>	50	48.7	97.3
100 ng/mL	5	<input checked="" type="checkbox"/>	100	97.7	97.7
500 ng/mL	6	<input checked="" type="checkbox"/>	500	494.7	98.9
1000 ng/mL	7	<input checked="" type="checkbox"/>	1000	1010.6	101.1
3000 ng/mL	8	<input checked="" type="checkbox"/>	3000	2997.4	99.9

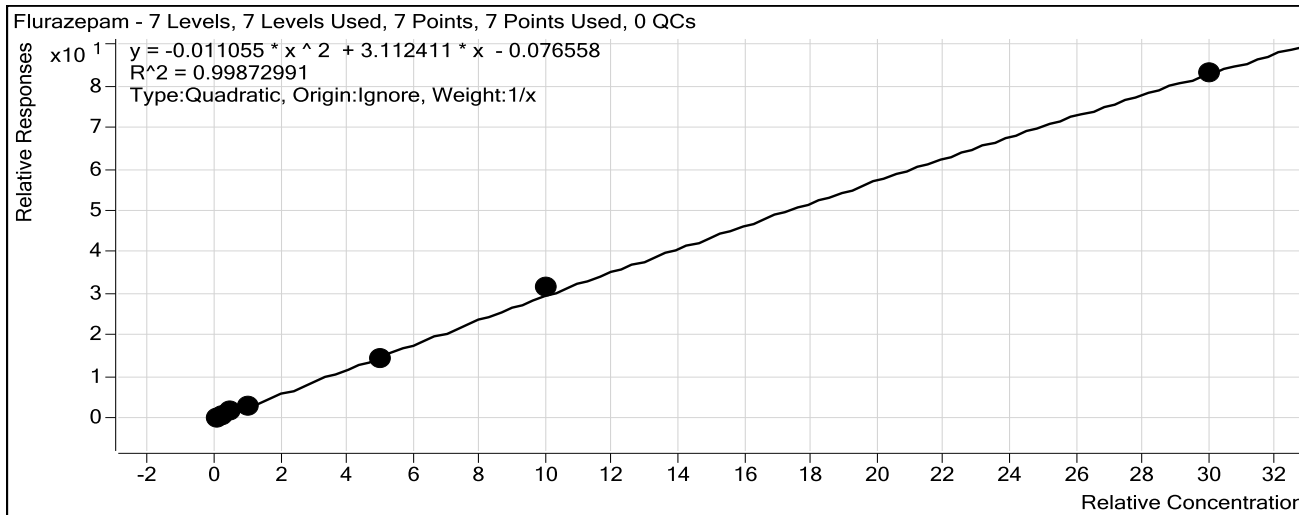
ISP Forensics Calibration Curve Report

Batch Data Path C:\MassHunter\Data\2016\Combined\080216 CS\QuantResults\8216 benzo.batch.bin

Last Calib Update 8/4/2016 9:11 AM

Analyst Name ISP TOX

Target Compound *Flurazepam*
Internal Standard *Diazepam-D5 ISTD*



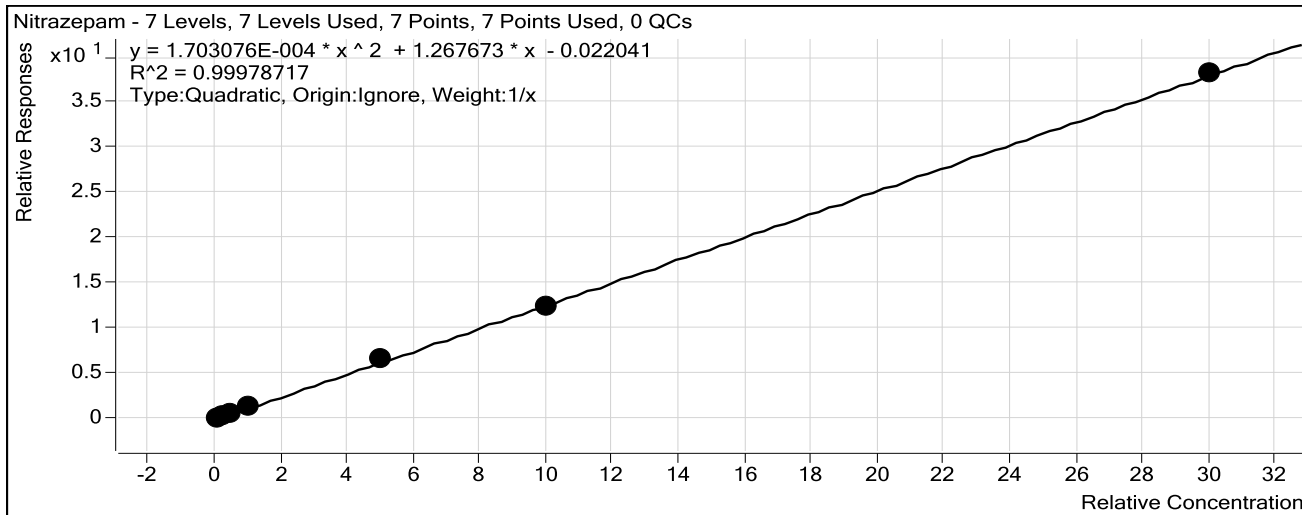
Sample	Level	Enabled	Exp Conc	Final Conc	Accuracy
10 ng/mL	2	<input checked="" type="checkbox"/>	10	9.9	98.6
25 ng/mL	3	<input checked="" type="checkbox"/>	25	26.7	106.7
50 ng/mL	4	<input checked="" type="checkbox"/>	50	49.8	99.6
100 ng/mL	5	<input checked="" type="checkbox"/>	100	98.0	98.0
500 ng/mL	6	<input checked="" type="checkbox"/>	500	463.4	92.7
1000 ng/mL	7	<input checked="" type="checkbox"/>	1000	1048.8	104.9
3000 ng/mL	8	<input checked="" type="checkbox"/>	3000	2988.4	99.6

ISP Forensics Calibration Curve Report

Batch Data Path C:\MassHunter\Data\2016\Combined\080216 CS\QuantResults\8216 benzo.batch.bin

Last Calib Update 8/4/2016 9:11 AM **Analyst Name** ISP TOX

Target Compound Nitrazepam
Internal Standard Clonazepam-D4 ISTD



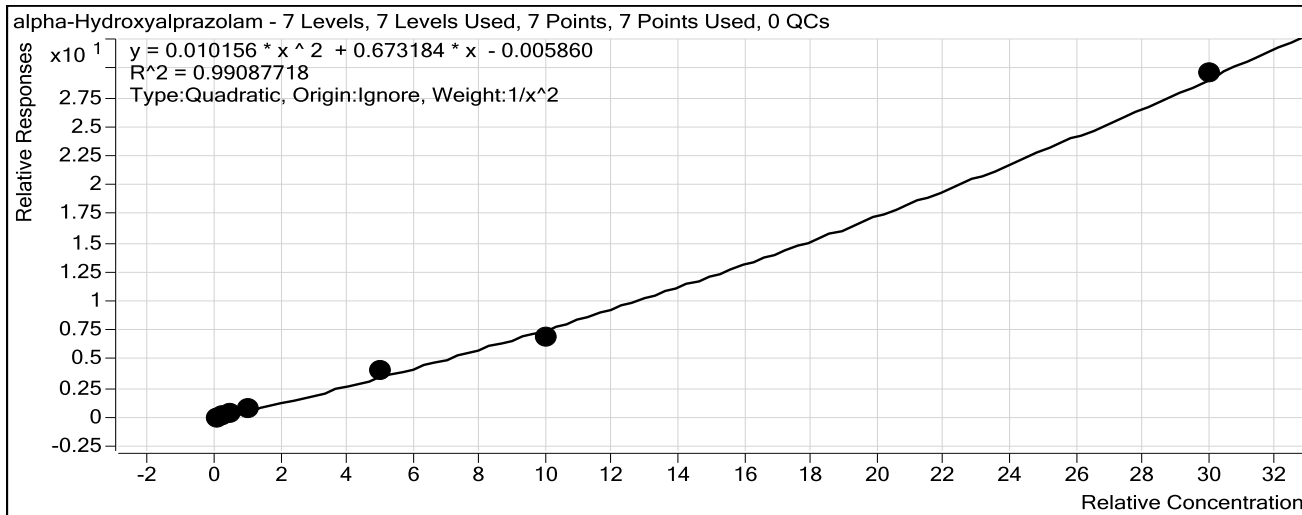
Sample	Level	Enabled	Exp Conc	Final Conc	Accuracy
10 ngmL	2	<input checked="" type="checkbox"/>	10	10.1	100.9
25 ngmL	3	<input checked="" type="checkbox"/>	25	26.2	104.7
50 ngmL	4	<input checked="" type="checkbox"/>	50	48.0	96.0
100 ngmL	5	<input checked="" type="checkbox"/>	100	96.6	96.6
500 ngmL	6	<input checked="" type="checkbox"/>	500	515.8	103.2
1000 ngmL	7	<input checked="" type="checkbox"/>	1000	986.3	98.6
3000 ngmL	8	<input checked="" type="checkbox"/>	3000	3002.1	100.1

ISP Forensics Calibration Curve Report

Batch Data Path C:\MassHunter\Data\2016\Combined\080216 CS\QuantResults\8216 benzo.batch.bin

Last Calib Update 8/4/2016 9:11 AM **Analyst Name** ISP TOX

Target Compound *alpha-Hydroxyalprazolam*
Internal Standard *alphahydroxyalprazolam-D5 ISTD*



Sample	Level	Enabled	Exp Conc	Final Conc	Accuracy
10 ng/mL	2	<input checked="" type="checkbox"/>	10	10.1	100.8
25 ng/mL	3	<input checked="" type="checkbox"/>	25	25.8	103.0
50 ng/mL	4	<input checked="" type="checkbox"/>	50	43.9	87.8
100 ng/mL	5	<input checked="" type="checkbox"/>	100	102.7	102.7
500 ng/mL	6	<input checked="" type="checkbox"/>	500	569.4	113.9
1000 ng/mL	7	<input checked="" type="checkbox"/>	1000	910.6	91.1
3000 ng/mL	8	<input checked="" type="checkbox"/>	3000	3019.5	100.6

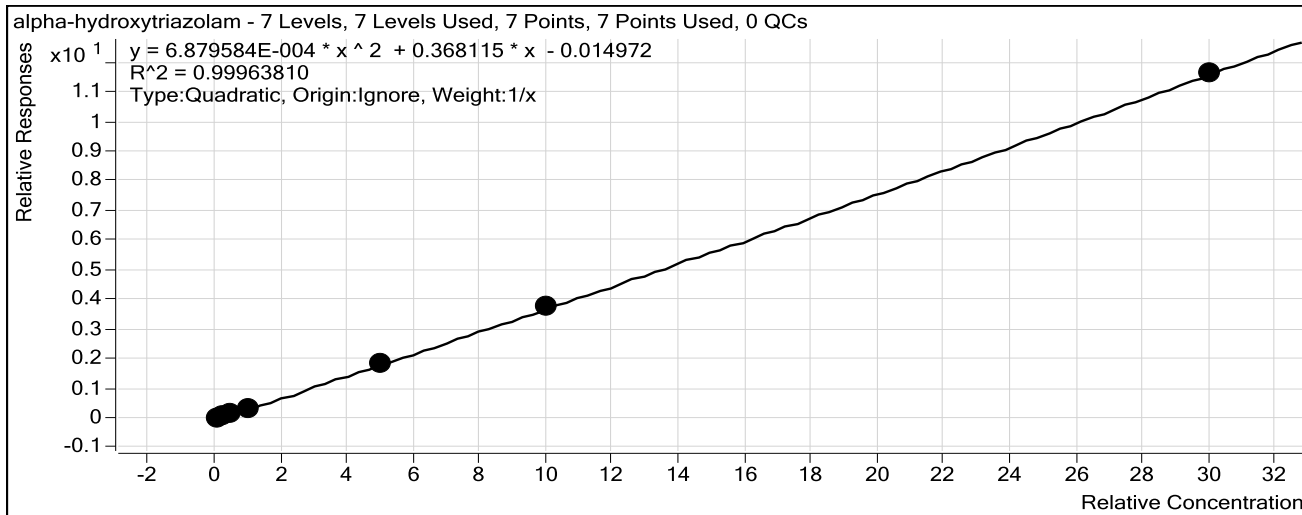
ISP Forensics Calibration Curve Report

Batch Data Path C:\MassHunter\Data\2016\Combined\080216 CS\QuantResults\8216 benzo.batch.bin

Last Calib Update 8/4/2016 9:11 AM **Analyst Name** ISP TOX

Target Compound *alpha-hydroxytriazolam*

Internal Standard *Nordiazepam-D5 ISTD*



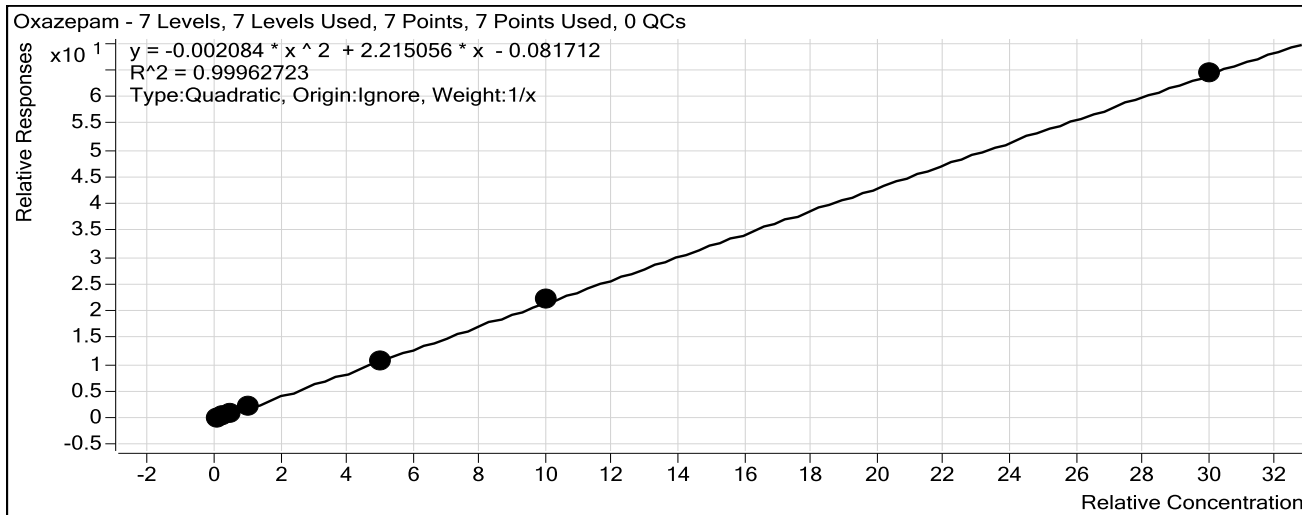
Sample	Level	Enabled	Exp Conc	Final Conc	Accuracy
10 ng/mL	2	<input checked="" type="checkbox"/>	10	11.7	117.0
25 ng/mL	3	<input checked="" type="checkbox"/>	25	24.6	98.4
50 ng/mL	4	<input checked="" type="checkbox"/>	50	45.8	91.6
100 ng/mL	5	<input checked="" type="checkbox"/>	100	91.8	91.8
500 ng/mL	6	<input checked="" type="checkbox"/>	500	497.2	99.4
1000 ng/mL	7	<input checked="" type="checkbox"/>	1000	1019.0	101.9
3000 ng/mL	8	<input checked="" type="checkbox"/>	3000	2994.8	99.8

ISP Forensics Calibration Curve Report

Batch Data Path C:\MassHunter\Data\2016\Combined\080216 CS\QuantResults\8216 benzo.batch.bin

Last Calib Update 8/4/2016 9:11 AM **Analyst Name** ISP TOX

Target Compound Oxazepam
Internal Standard Nordiazepam-D5 ISTD



Sample	Level	Enabled	Exp Conc	Final Conc	Accuracy
10 ng/mL	2	<input checked="" type="checkbox"/>	10	11.6	116.1
25 ng/mL	3	<input checked="" type="checkbox"/>	25	23.7	94.9
50 ng/mL	4	<input checked="" type="checkbox"/>	50	46.5	92.9
100 ng/mL	5	<input checked="" type="checkbox"/>	100	96.1	96.1
500 ng/mL	6	<input checked="" type="checkbox"/>	500	488.8	97.8
1000 ng/mL	7	<input checked="" type="checkbox"/>	1000	1024.7	102.5
3000 ng/mL	8	<input checked="" type="checkbox"/>	3000	2993.6	99.8

ISP Forensics Calibration Curve Report

Batch Data Path C:\MassHunter\Data\2016\Combined\080216 CS\QuantResults\8216 benzo.batch.bin

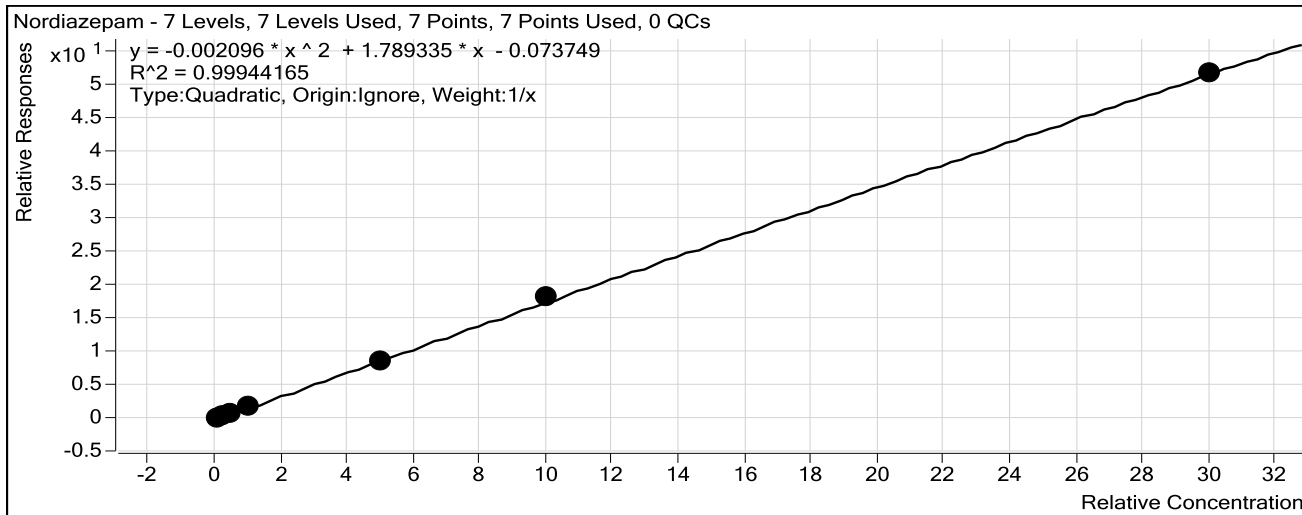
Last Calib Update 8/4/2016 9:11 AM

Analyst Name

ISP TOX

Target Compound Nordiazepam

Internal Standard Nordiazepam-D5 ISTD



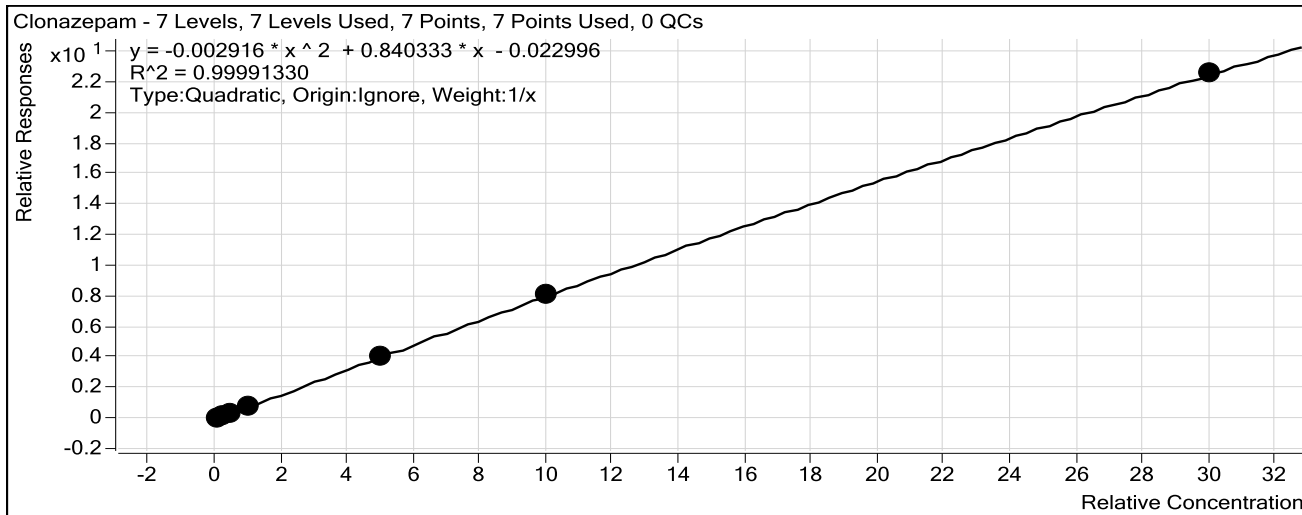
Sample	Level	Enabled	Exp Conc	Final Conc	Accuracy
10 ng/mL	2	<input checked="" type="checkbox"/>	10	11.5	115.4
25 ng/mL	3	<input checked="" type="checkbox"/>	25	24.0	96.1
50 ng/mL	4	<input checked="" type="checkbox"/>	50	47.1	94.2
100 ng/mL	5	<input checked="" type="checkbox"/>	100	94.6	94.6
500 ng/mL	6	<input checked="" type="checkbox"/>	500	483.1	96.6
1000 ng/mL	7	<input checked="" type="checkbox"/>	1000	1032.8	103.3
3000 ng/mL	8	<input checked="" type="checkbox"/>	3000	2991.8	99.7

ISP Forensics Calibration Curve Report

Batch Data Path C:\MassHunter\Data\2016\Combined\080216 CS\QuantResults\8216 benzo.batch.bin

Last Calib Update 8/4/2016 9:11 AM **Analyst Name** ISP TOX

Target Compound *Clonazepam*
Internal Standard *Clonazepam-D4 ISTD*



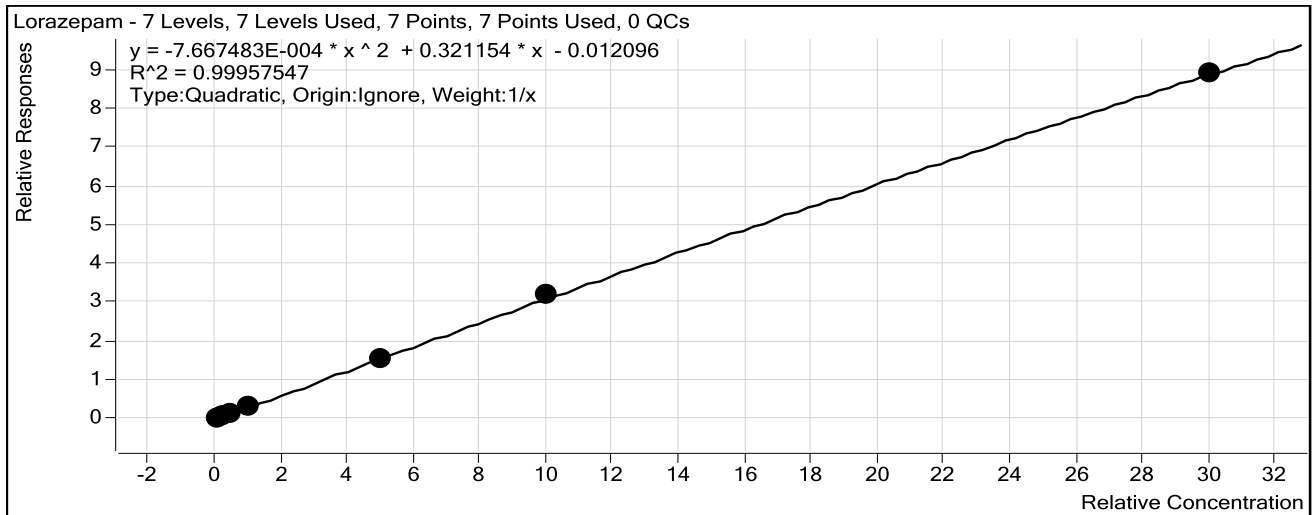
Sample	Level	Enabled	Exp Conc	Final Conc	Accuracy
10 ng/mL	2	<input checked="" type="checkbox"/>	10	10.5	105.2
25 ng/mL	3	<input checked="" type="checkbox"/>	25	25.2	100.6
50 ng/mL	4	<input checked="" type="checkbox"/>	50	48.8	97.6
100 ng/mL	5	<input checked="" type="checkbox"/>	100	96.3	96.3
500 ng/mL	6	<input checked="" type="checkbox"/>	500	496.5	99.3
1000 ng/mL	7	<input checked="" type="checkbox"/>	1000	1011.1	101.1
3000 ng/mL	8	<input checked="" type="checkbox"/>	3000	2996.5	99.9

ISP Forensics Calibration Curve Report

Batch Data Path C:\MassHunter\Data\2016\Combined\080216 CS\QuantResults\8216 benzo.batch.bin

Last Calib Update 8/4/2016 9:11 AM **Analyst Name** ISP TOX

Target Compound Lorazepam
Internal Standard Nordiazepam-D5 ISTD



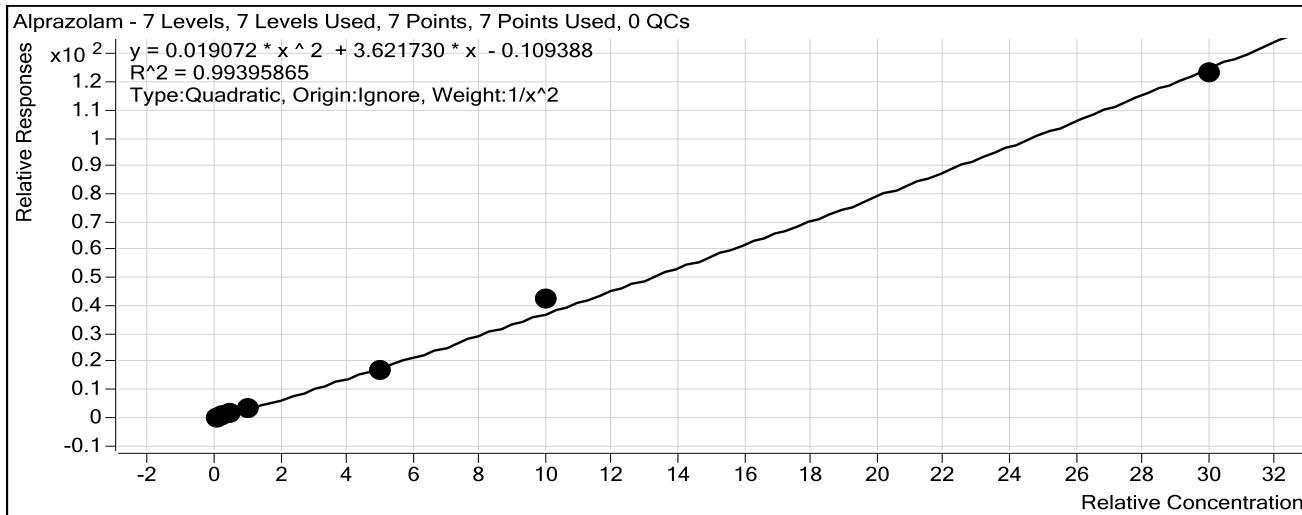
Sample	Level	Enabled	Exp Conc	Final Conc	Accuracy
10 ng/mL	2	<input checked="" type="checkbox"/>	10	11.6	115.5
25 ng/mL	3	<input checked="" type="checkbox"/>	25	23.9	95.8
50 ng/mL	4	<input checked="" type="checkbox"/>	50	48.3	96.7
100 ng/mL	5	<input checked="" type="checkbox"/>	100	91.2	91.2
500 ng/mL	6	<input checked="" type="checkbox"/>	500	494.0	98.8
1000 ng/mL	7	<input checked="" type="checkbox"/>	1000	1022.9	102.3
3000 ng/mL	8	<input checked="" type="checkbox"/>	3000	2993.0	99.8

ISP Forensics Calibration Curve Report

Batch Data Path C:\MassHunter\Data\2016\Combined\080216 CS\QuantResults\8216 benzo.batch.bin

Last Calib Update 8/4/2016 9:11 AM **Analyst Name** ISP TOX

Target Compound Alprazolam
Internal Standard alphahydroxyalprazolam-D5 ISTD



Sample	Level	Enabled	Exp Conc	Final Conc	Accuracy
10 ng/mL	2	<input checked="" type="checkbox"/>	10	10.2	102.2
25 ng/mL	3	<input checked="" type="checkbox"/>	25	23.1	92.4
50 ng/mL	4	<input checked="" type="checkbox"/>	50	52.0	103.9
100 ng/mL	5	<input checked="" type="checkbox"/>	100	101.6	101.6
500 ng/mL	6	<input checked="" type="checkbox"/>	500	455.8	91.2
1000 ng/mL	7	<input checked="" type="checkbox"/>	1000	1103.9	110.4
3000 ng/mL	8	<input checked="" type="checkbox"/>	3000	2946.0	98.2

ISP Forensics Calibration Curve Report

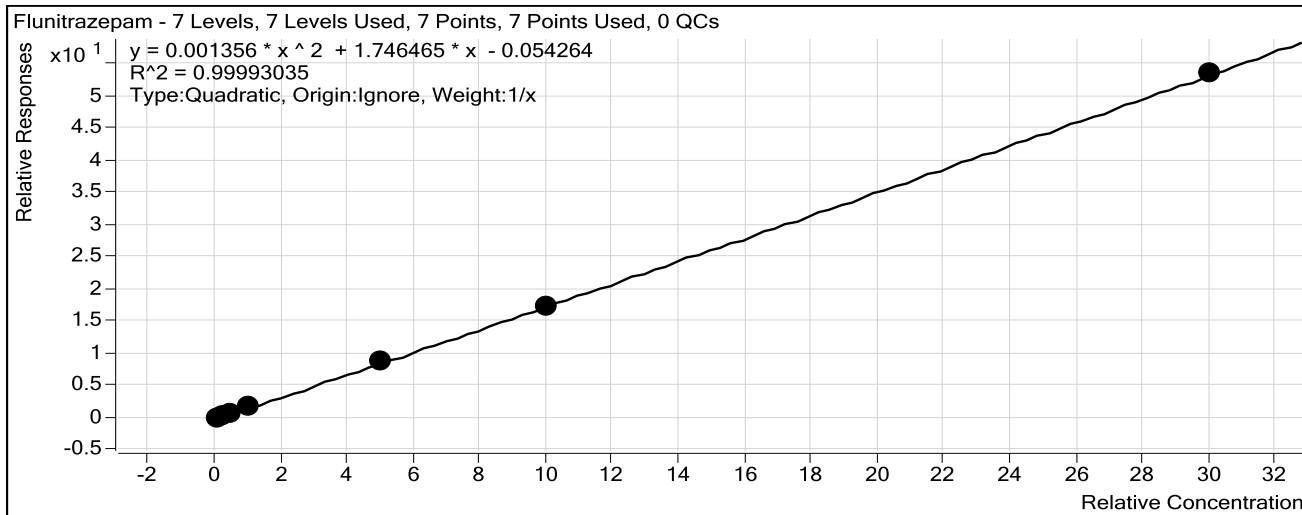
Batch Data Path C:\MassHunter\Data\2016\Combined\080216 CS\QuantResults\8216 benzo.batch.bin

Last Calib Update 8/4/2016 9:11 AM

Analyst Name ISP TOX

Target Compound Flunitrazepam

Internal Standard Clonazepam-D4 ISTD



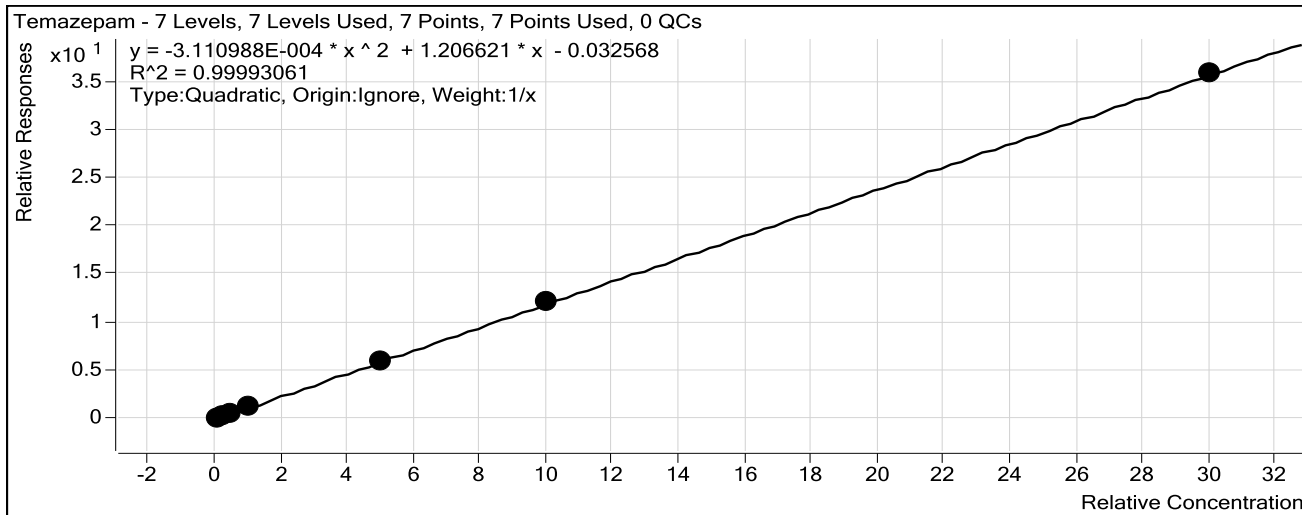
Sample	Level	Enabled	Exp Conc	Final Conc	Accuracy
10 ng/mL	2	<input checked="" type="checkbox"/>	10	10.5	105.2
25 ng/mL	3	<input checked="" type="checkbox"/>	25	25.5	102.2
50 ng/mL	4	<input checked="" type="checkbox"/>	50	46.9	93.8
100 ng/mL	5	<input checked="" type="checkbox"/>	100	97.8	97.8
500 ng/mL	6	<input checked="" type="checkbox"/>	500	504.5	100.9
1000 ng/mL	7	<input checked="" type="checkbox"/>	1000	1000.4	100.0
3000 ng/mL	8	<input checked="" type="checkbox"/>	3000	2999.3	100.0

ISP Forensics Calibration Curve Report

Batch Data Path C:\MassHunter\Data\2016\Combined\080216 CS\QuantResults\8216 benzo.batch.bin

Last Calib Update 8/4/2016 9:11 AM **Analyst Name** ISP TOX

Target Compound *Temazepam*
Internal Standard *Temazepam-D5 ISTD*



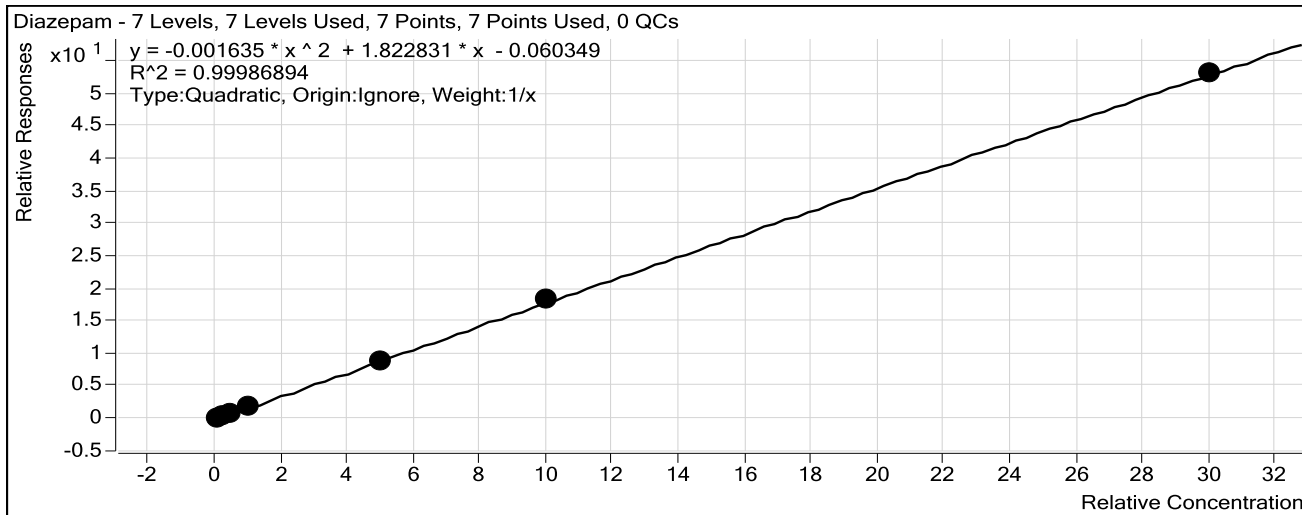
Sample	Level	Enabled	Exp Conc	Final Conc	Accuracy
10 ng/mL	2	<input checked="" type="checkbox"/>	10	10.3	103.3
25 ng/mL	3	<input checked="" type="checkbox"/>	25	25.8	103.2
50 ng/mL	4	<input checked="" type="checkbox"/>	50	48.1	96.3
100 ng/mL	5	<input checked="" type="checkbox"/>	100	97.1	97.1
500 ng/mL	6	<input checked="" type="checkbox"/>	500	496.7	99.3
1000 ng/mL	7	<input checked="" type="checkbox"/>	1000	1009.5	100.9
3000 ng/mL	8	<input checked="" type="checkbox"/>	3000	2997.5	99.9

ISP Forensics Calibration Curve Report

Batch Data Path C:\MassHunter\Data\2016\Combined\080216 CS\QuantResults\8216 benzo.batch.bin

Last Calib Update 8/4/2016 9:11 AM **Analyst Name** ISP TOX

Target Compound *Diazepam*
Internal Standard *Diazepam-D5 ISTD*



Sample	Level	Enabled	Exp Conc	Final Conc	Accuracy
10 ng/mL	2	<input checked="" type="checkbox"/>	10	10.7	106.7
25 ng/mL	3	<input checked="" type="checkbox"/>	25	25.5	102.0
50 ng/mL	4	<input checked="" type="checkbox"/>	50	47.8	95.6
100 ng/mL	5	<input checked="" type="checkbox"/>	100	95.3	95.3
500 ng/mL	6	<input checked="" type="checkbox"/>	500	496.8	99.4
1000 ng/mL	7	<input checked="" type="checkbox"/>	1000	1012.6	101.3
3000 ng/mL	8	<input checked="" type="checkbox"/>	3000	2996.4	99.9

ISP FORENSICS

Pocatello

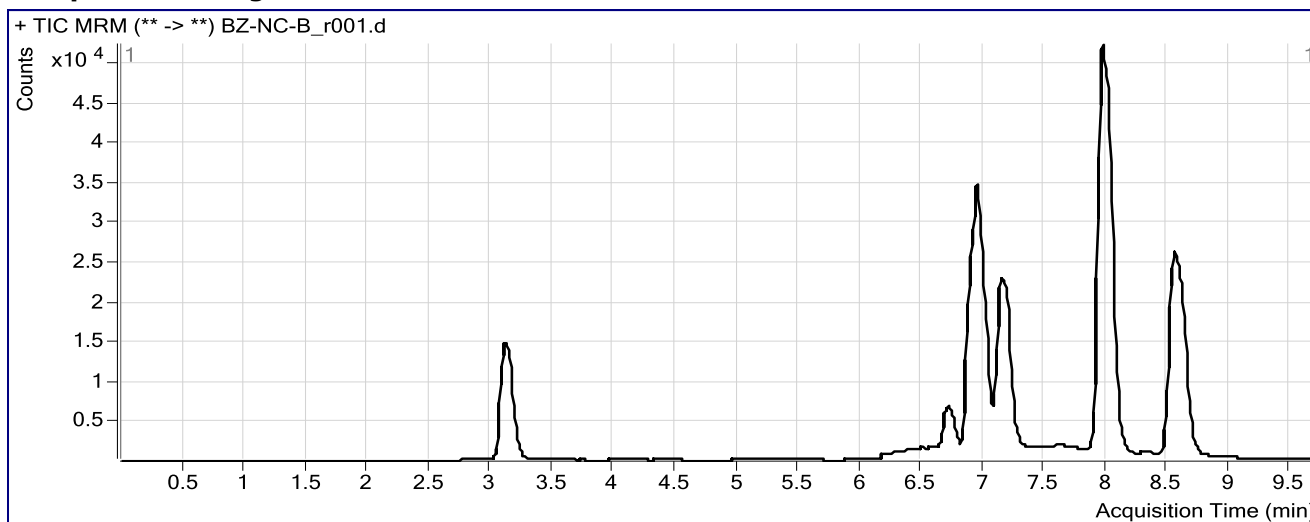
Benzodiazepine Analysis Report

Batch Data Path C:\MassHunter\Data\2016\Combined\080216 CS\QuantResults\8216 benzo.batch.bin
Analysis Time 8/4/2016 9:11 AM **Analyst Name** ISPUser
Report Time 8/4/2016 9:13 AM **Reporter Name** ISPUser
Last Calib Update 8/4/2016 9:11 AM **Batch State** Processed

Analysis Info

Acq Time 2016-08-03 01:49 **Data File** BZ-NC-B_r001.d
Sample Type Sample **Sample Name** Negative Blood Control
Dilution 1 **Acq Method** Benzos_Z_Drugs_ACN_FA_ISP_2016.m
Position P1-E9 **Sample Info** UTAK Negative Whole Blood LOT B1013
Inj Vol -1 **Comment** AM 6.1.1 Benzo and Z by LCQQQ

Sample Chromatogram



ISP FORENSICS

Pocatello

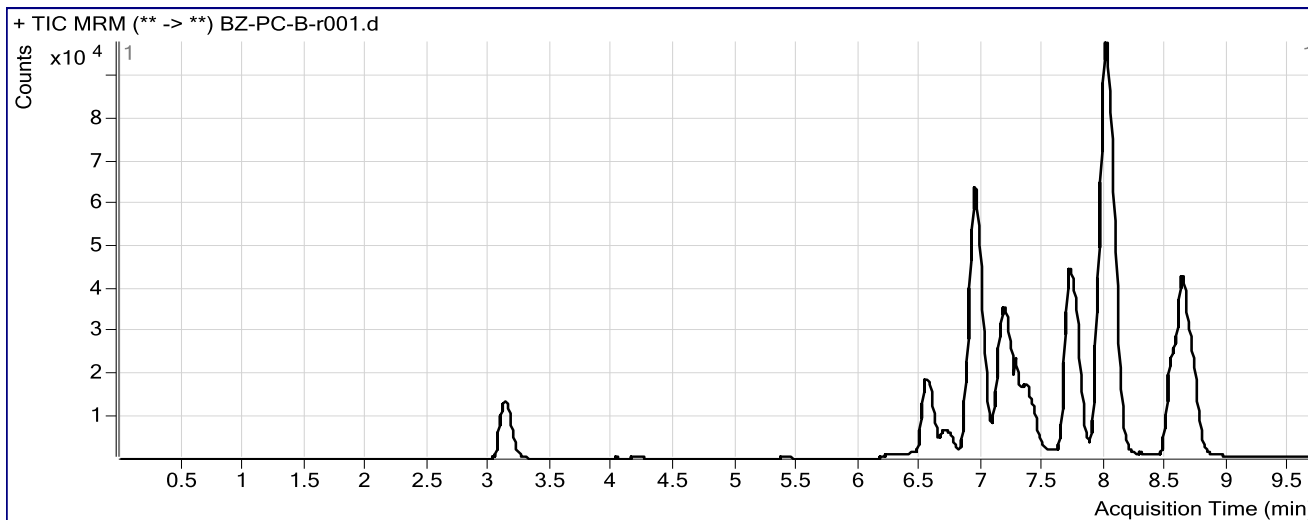
Benzodiazepine Analysis Report

Batch Data Path	C:\MassHunter\Data\2016\Combined\080216 CS\QuantResults\8216 benzo.batch.bin		
Analysis Time	8/4/2016 9:11 AM	Analyst Name	ISPUser
Report Time	8/4/2016 9:13 AM	Reporter Name	ISPUser
Last Calib Update	8/4/2016 9:11 AM	Batch State	Processed

Analysis Info

Acq Time	2016-08-03 02:05	Data File	BZ-PC-B-r001.d
Sample Type	Sample	Sample Name	Positive Blood Control
Dilution	1	Acq Method	Benzos_Z_Drugs_ACN_FA_ISP_2016.m
Position	P1-E8	Sample Info	Benzodiazepines Mix Cerilliant lot FE012413-02 in UTAK LOT B1013
Inj Vol	-1	Comment	AM 6.1.1 Benzo and Z by LCQQQ

Sample Chromatogram



Results

Compound	ISTD Compound	RT	Response	ISTD Resp	Resp Ratio	Final Conc
Nitrazepam	Clonazepam-D4 ISTD	6.540	73271	107257	0.6831	55.6233
Oxazepam	Nordiazepam-D5 ISTD	6.934	129272	69943	1.8482	87.2008
Clonazepam	Clonazepam-D4 ISTD	7.176	82286	107257	0.7672	94.3403
Lorazepam	Nordiazepam-D5 ISTD	7.259	19945	69943	0.2852	92.7662
Alprazolam	alphanhydroxyalprazolam-D5 ISTD	7.362	90852	24538	3.7025	104.6739
Flunitrazepam	Clonazepam-D4 ISTD	7.706	229195	107257	2.1369	125.3390
Temazepam	Temazepam-D5 ISTD	8.012	367891	317383	1.1591	98.7892
Diazepam	Diazepam-D5 ISTD	8.641	178191	123790	1.4395	82.3400